

HNC - Series Cascade / Geyser Nozzle

Specification: HNC-SERIES cascade nozzle will provide a highly visible white water effect. Cascade jets require a constant water level and are constructed from cast brass and machined finished. All models have a integral swivel as part of the unit. These nozzles are available from 1" to 3" in size.



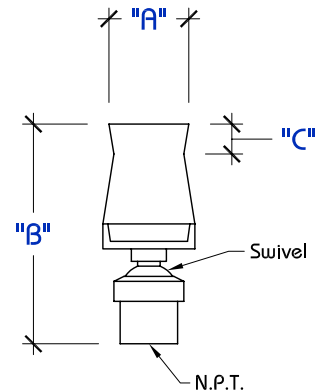
Dimensional Data

MODEL	"A"	"B"	"C"	inlet	weight (lb)
HNC-1000	2"	5-1/2"	3/4"	1" NPT	1 lb.
HNC-1500	2-3/4"	8-1/4"	3/4"	1.5" NPT	2 lbs.
HNC-2000	3-1/2"	9"	1"	2" NPT	4 lbs.
HNC-3000	4-1/4"	12"	1"	3" NPT	9 lbs

All dimensions are in inches.

Performance Data

MODEL	HNC-1000		HNC-1500		HNC-2000		HNC-3000	
HEIGHT	GPM	HD	GPM	HD	GPM	HD	GPM	HD
2	16	12	22	12				
3	21	18	28	16				
4	23	23	30	19	40	13		
5	26	28	34	22	46	20	87	20
6	29	37	41	30	49	25	89	26
8			44	36.5	60	32	92	32
10			47	48	66	41	110	36
15					74	48	140	56
20					91	70	164	76
30							205	118
40							410	174
50							524	299



Optional Components :
a.) brass ball valves
b.) slab penetration

NOTE "C" IS DIMENSION ABOVE WATERLINE

Warning: Fountain nozzles are intended for decorative water feature display and enjoyment only. Fountain nozzles are not intended for installation or use in a swimming pool, spa, designated swimming or bathing area as it is possible to become injured while swimming, playing, or jumping around fountain displays. Fountain nozzles are to be installed in designated fountain display areas only. Please note that Hitech Fountain Components is not a licensed engineer nor architect. Any drawings provided are indications of what is desired until reviewed and stamped by an appropriate licensed mechanical engineer.

(rev.3.11.04)

Hitech Fountain Components
4917 Hartford Street
Tampa, FL 33619

Division of Hitech Products, Inc.
www.fountaincomponents.com

Hitech Fountain Components
P.813-248-5571
F.813-247-2667